



£1,900 Per Month
Corn Mead

Welwyn Garden City, AL8 7QR

PROPERTY SUMMARY

The property is entered via a welcoming hallway, leading to a generous lounge with a feature fireplace, creating comfortable space for family gatherings. The modern fitted kitchen offers a range of wall and base units, ample work surfaces, and integrated appliances, with direct access to the garden via patio doors that open onto the rear patio and seating area, seamlessly connecting the indoors with the outdoors. The kitchen dining area offers an ideal setting for formal meals or casual entertaining, with a lovely outlook over the garden. The utility room includes additional

appliances, extra storage space, a sink, and counter surfaces. A ground-floor cloakroom completes the layout on this level.

Upstairs, the property features three well-sized double bedrooms, each with plenty of space for furnishings, plus a fourth single bedroom or home office. The modern family bathroom includes a white suite with a bath, overhead shower, wash basin, and WC, finished with tiled surfaces.

Externally, the home enjoys a private rear garden that backs directly onto woodland –

a rare and sought-after feature, offering a peaceful backdrop and opportunities for walking straight from your back gate. The garden includes a terrace for seating, a lawn with mature borders, and gated access to the rear.

Within an easy 10-minute walk are Monks' Walk High School and Homerwood Primary School, both rated "Good". Two additional primary schools also nearby make the property especially suitable for families. Superb woodland access, Excellent transport links: A bus stop just a few minutes away connects to Welwyn Garden City town centre and the train station.

4



1



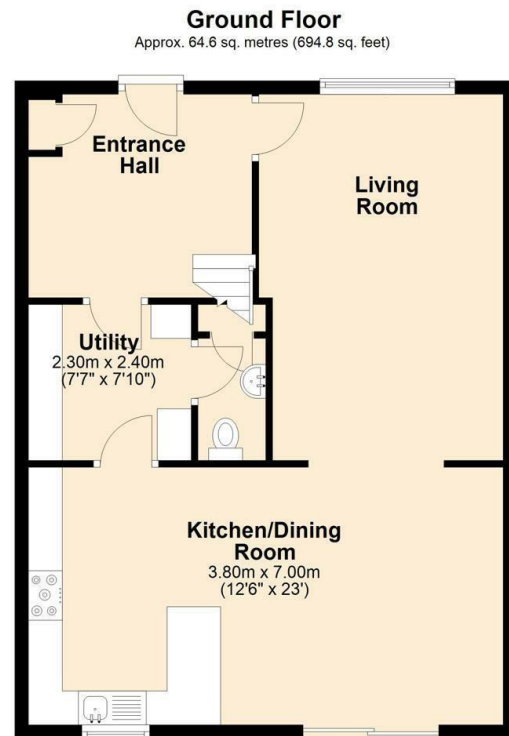
2











Total area: approx. 113.5 sq. metres (1221.8 sq. feet)

LOCAL AUTHORITY

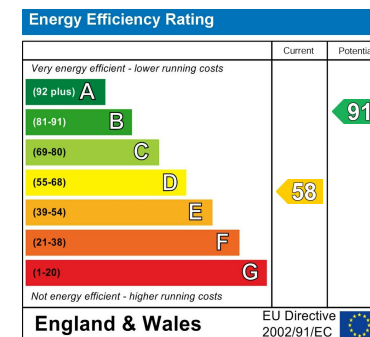
TENURE

COUNCIL TAX BAND

D

VIEWINGS

By prior appointment only



Agents Note: Whilst every care has been taken to prepare these particulars, they are for guidance purposes only. All measurements are approximate and are for general guidance purposes only and whilst every care has been taken to ensure their accuracy, they should not be relied upon and potential buyers/tenants are advised to recheck the measurements



OFFICE ADDRESS

Putterills Lettings
123 London Road
Knebworth
SG3 6EX

OFFICE DETAILS

01462 419333
lettings@putterills.co.uk
www.putterills.co.uk